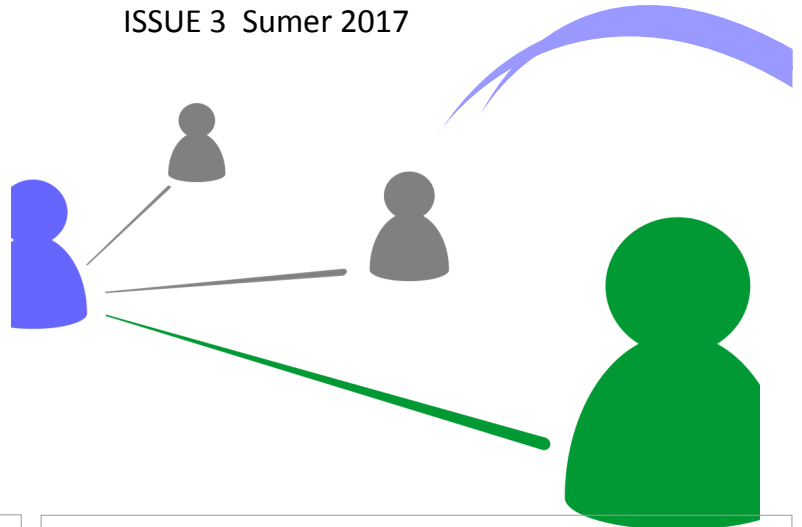


Summer Fun With Friends!





MEETUP NEWS THURSDAY MEETUPS

(Previously called QCC Meetups)

Due to the summer schedule at Quinsigamond Community College (QCC) meetups on Thursdays in June will be held at other locations in the community near the college. We will have dinner at Wild Willy's Burgers on June 8 and an ice cream social at Meola's Ice Cream on June 22. Our popular game nights at QCC will return for two Thursdays in July and one in August. (See colanders for details).

Hopedale Meetups

We've had a tremendous positive response to the monthly Friday evening at the Hopedale Community House. Come and get together with people with similar interests for pizza and bowling on the third Friday in June. This facility is closed for July and August, but Hopedale Meetups will start again in September.

New - Woman's Meetup

Announcing our first Woman's Meetup. This is in response to multiple requests from the increasing number of woman attending the ASD Events who are asking to meet and talk with other woman on the spectrum. Join us at Panera Bread at the Mall at Whitley Field in Leominster MA on August 4, from 3:00PM - 4:00PM.

RELATIONSHIP / SOCIAL SKILLS GROUPS

Over the past quarter I have been excited to see individuals make new connections and start to develop new friendships as seen by many exchanging contact information. Many of these connections have been made through the two Relationships/Social Skills groups we have held. Come and learn how to meet new friends!

Referrals are now being taken for 2 new Relationships / Social Skills Groups for 2017.

- Groups run 1x weekly for 10 weeks.
- Groups will tentatively start –
Week of July 17 - ending week of Sept. 25
Week of Oct. 10 -ending week of Dec. 18.
- Groups are designed for 8-10 individuals and can be located in different areas if enough participants are available. Group content can be somewhat flexible to meet the needs of each group.
- Contact Dianne for additional information about attending a Relationships / Social Skills Group dcrossley@hmea.org or 508-298-1611.



SIGN UP for EVENTS

Please register ahead of time for all activities, meetups, groups, and workshops!

Note the Following:

- Only 20 events at the Center can be posted at a time. If an event is not posted yet, register at a later date or register by contacting Dianne.
- It is important to register as early as possible so reservations can be made.
- Some events will have a maximum number of participants, registration will close when that number is met.

STEPS to REGISTER for an ASD ADULT EVENT



PLEASE REGISTER USING GOOGLE CHROME!! - Use Google Chrome as your Browser. Other Browsers Result in Errors and Abandoned Registrations that tell us that you did not Complete the Registration Process.

1. Go to our website (www.autismresourcecentral.org)
2. **Click on Register for Event** – Top Right Corner of Home Page in the blue half circle.
3. Read the Event Policy Agreement Page, scroll down to the bottom of the page and **Click on I Agree Button** to be taken to the calendar of events.
4. Scroll through the list of events to find the event you wish to attend. **Click on the Link** to go to the registration page for the event. (Note: All activities for ASD Adults being run by Dianne Crossley will state, “Adults with Expanded Criteria”).
5. On the registration page **Click on, Register Now.**
6. Fill out Personal Information. **Click on Continue** at Bottom of Page.
7. The Payment Page will come up if all required information is completed. Fill out Payment Information if required. The Center accepts these Credit Cards: Visa, Master Card, American Express, and Discover Card. **Click on Pay Now.** You should receive an acknowledgement e-mail. If you encounter problems: E-mail Dianne at dcrossley@hmea.org.



JUNE

June 8, 2017

Dinner

Wild Willy's

Burgers (Gluten Free Menu)

317 W. Boylston St.

Worcester MA

6:00PM - 7:30PM

Cost: Pay for your own dinner

June 16, 2017

Hopedale Meetup

Pizza and Bowling

Hopedale Community House

43 Hope St. Hopedale

5:30PM - 7:30PM

June 22, 2017

Thursday Meetup

Ice Cream Social

Meola's Ice Cream

164 West Boylston St.

West Boylston MA

6:00PM - 7:30PM

June 25, 2017

Major Comic Con

DCU Center

50 Foster St., Worcester

11:00AM - 1:30PM

June 28, 2017

Parents Support Group

Parents Night Out at

99 Restaurant

196B East Main St. Milford

6:15PM - 8:30PM

JULY

July 13, 2017

Thursday Meetup at

QCC - Quinsigamond

Community College

670 W Boylston St. Worcester

RM239 Harrington

Learning Center

Egan Conference Room

6:00-7:30PM

July 23, 2017

(ALL CENTER EVENT)

Breezy Waterslides & Picnic

Grounds

520 NW Main St.,

Douglas MA

10:00AM - 1:00PM

July 27, 2017

Thursday Meetup

QCC

6:00PM - 7:30PM

AUGUST

August 4, 2017

Woman's Meetup

Panera Bread at

Whitney Field Mall

100 Commercial Rd.

Leominster MA

3:00PM - 5:00PM

(Door is outside at the back of the mall near Old Navy and Burlington Coat Factory)

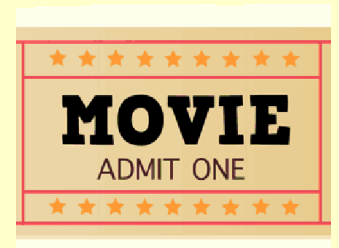
August 10, 2017

Thursday Meetup

At QCC

6:00PM - 7:30PM

SUMMER BREAK



ACTIVITIES & ANNOUNCEMENTS

MASSive Comic Con at the DCU Center

Sunday June 25, 2017

11:00AM - 1:30PM

Only 2 slots left for this popular event! Registration is closing at the beginning of June. You must sign-up on our website. A \$10.00 deposit is required to hold your space which will be returned upon attending activity. Tickets are being purchased by the Center. Food and other purchases are at your own cost.



Breezy Picnic Area & Water Slides

**** (THIS IS AN ALL CENTER FAMILY EVENT) ****

Sunday July 23, 10:00AM – 1:00PM

ASD Adults with Expanded Criteria and their families are invited to this popular annual summer event with families of children and teens served by the Center. ASD Adults can come by themselves or with family members.

Enjoy the beautiful picnic grounds as well as a swimming area and water slides. Families can sit by themselves or with others. Some picnic tables are available, but are filled up quickly. Bring beach chairs, blankets, sun screen, etc. Bring your own picnic lunch or food can be purchased at the concession stand.

Note: You must register on the website. There will be only one registration for this event for the entire Center. There is not a separate registration that states, “Adults with Expanded Criteria”. Sign up early, this event fills up fast!

Fee: \$5.00 /p.p.

Calling For Your Input

- Would you like to share successes you have had such as getting a job or attending a class?
- Do you know of a good place to meet friends in your community?
- Do you know a good resource that could be helpful to others?
- Would you like to write a brief blog about your interests or what you did over the summer?

If so contact Dianne so we can start to learn and share resources and helpful information with each other.

Dianne Crossley, LICSW
Adult Services Specialist
dcrossley@hmea.org
www.autismresourcecentral.org
508-298-1611

